

# DURASTRIP PRO EVO IP68

## LED

LED 2835:  
128 LED/m - 5W/m - 10W/m - 15W/m  
240 LED/m - 22W/m  
24VDC  
Ra >92  
Lifetime: >50,000 h  
Warranty: 5 years

## BINNING

ANSI/SDCM: 3 step.

## DIMMABILITY

Dimmable 0-100% Flicker Free  
DALI - DMX - 1-10  
Analogue and digital domotic control systems  
Push Dali with ZKCD controllers  
CASAMBI compatible

## CONNECTIONS

IP68: complete with a 15 cm long IP65/68 M/F cable on 2 sides.  
To connect in series or parallel, see diagram on page 160.  
Strips can be cut to size by following the cutting indications printed on the strips.

## ASSEMBLY

Complete with 3M double-sided tape to attach to the surface.  
When using double-sided tape decrease the application surface adequately

## PACKAGE

Packaged in 5 m reels.  
For custom products cut to specific lengths see page 11, 318.

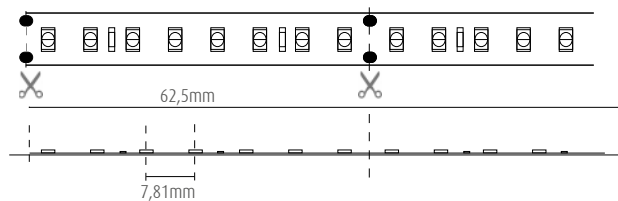
The PRO EVO line is characterized by the narrow pitch of the LEDs even on the smaller power 5W/m: a quality product with 140lm/W efficiency. Excellent colour rendering, Ra92, and a choice of 4 different wattages, from 5W per metre to 24W per metre (22W for the IP68 version).

It can be used in any project and provides excellent energy savings in residential or commercial contexts.

White shades: 3000K and 4000K available, other colour temperatures on request and with MOQ. In IP20 and IP68 versions.

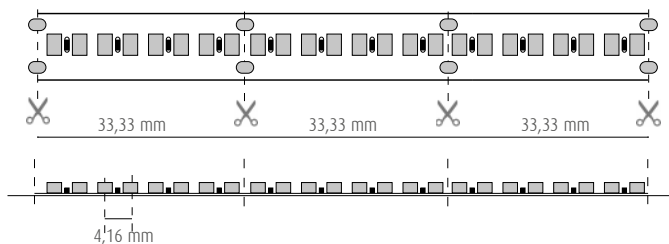
### LED SPACING AND PITCH CUT

8 LED (5W / 10W / 15W)






### LED SPACING AND PITCH CUT

8 LED (22W)



# DURASTRIP PRO EVO IP68

PRO	24V DC	Ra>92	50000h L70	IP68	-25° +35°C	III	UL E471161	G5/ h24	Risk Group 0
-----	--------	-------	------------	------	---------------	-----	---------------	------------	-----------------

art.	W	W/m	lm/m	K	N° LED/m		L	L1	L2	 8011905	
NEW 07U272405XOPE ▶	25	5	600	2700	128	120°	12	4	5000	014780	1
NEW 07U302405XOPE	25	5	645	3000	128	120°	12	4	5000	014797	1
NEW 07U352405XOPE ▶	25	5	645	3500	128	120°	12	4	5000	014803	1
NEW 07U402405XOPE	25	5	665	4000	128	120°	12	4	5000	014810	1
NEW 07U602405XOPE ▶	25	5	665	6000	128	120°	12	4	5000	014827	1
NEW 07U272410XOPE ▶	50	10	1195	2700	128	120°	12	4	5000	014834	1
NEW 07U302410XOPE	50	10	1290	3000	128	120°	12	4	5000	014841	1
NEW 07U352410XOPE ▶	50	10	1290	3500	128	120°	12	4	5000	014858	1
NEW 07U402410XOPE	50	10	1330	4000	128	120°	12	4	5000	014865	1
NEW 07U602410XOPE ▶	50	10	1330	6000	128	120°	12	4	5000	014872	1
NEW 07U272415XOPE ▶	75	15	1795	2700	128	120°	12	4	5000	014889	1
NEW 07U302415XOPE	75	15	1935	3000	128	120°	12	4	5000	014896	1
NEW 07U352415XOPE ▶	75	15	1935	3500	128	120°	12	4	5000	014902	1
NEW 07U402415XOPE	75	15	1995	4000	128	120°	12	4	5000	014919	1
NEW 07U602415XOPE ▶	75	15	1995	6000	128	120°	12	4	5000	014926	1
NEW 07U272422XOPE ▶	110	22	2635	2700	240	120°	12	4	5000	017408	1
NEW 07U302422XOPE	110	22	2835	3000	240	120°	12	4	5000	017415	1
NEW 07U352422XOPE ▶	110	22	2835	3500	240	120°	12	4	5000	017422	1
NEW 07U402422XOPE	110	22	2925	4000	240	120°	12	4	5000	017439	1
NEW 07U602422XOPE ▶	110	22	2925	6000	240	120°	12	4	5000	017446	1

▶ Orderable only with MOQ

## DRIVER



25W - 50W - 75W IP68	XLG-100-24-A
110W IP68	XLG-150-24-A

## CONTROLLER



**DALI-ZKTPC** (DALI)  
**ZKCDAFF** (DALI)  
**ZKCDMXWFF** (DMX)  
**ZKC1-10FF** (1-10)

**FF = FLICKER FREE**

## PROFILES



**UNIVERSAL PROFILES**  
**SURFACE PROFILES**  
**RECESSED PROFILES**

DRIVER: complete info on page 161